

Summer 9

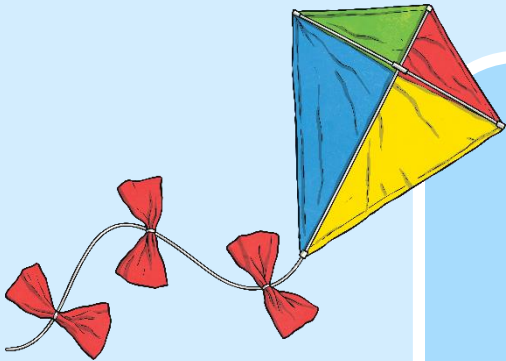


Fluency, Reasoning and Problem-Solving

Morning Starter



twinkl



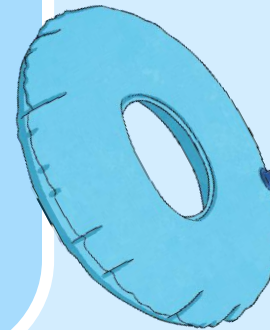
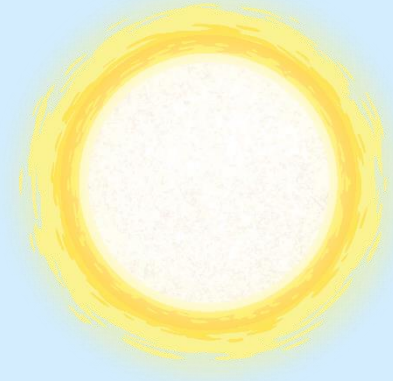
Monday

Tuesday

Wednesday

Thursday

Friday



Place Value

Write 1083 in words.



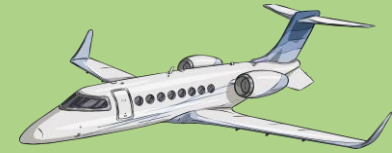
Reveal answer

Problem Solving

Alison's plane leaves the airport at 18:45. She arrives at her destination at 21:20.

How long did her journey take?

2 hours 35 minutes



Reveal answer

+ and -

$$843 + 70 =$$


Reveal answer

$$687 - 400 =$$


Reveal answer

× and ÷

$$38 \times 10 =$$


Reveal answer

$$600 \div 50 =$$


Reveal answer

Reasoning



The yellow lines on this flag are not perpendicular because they do not cross in the middle.

Is Jamil correct?

Explain why.



Place Value

What is the value of the underlined digit?

4 or 4 ones



Reveal answer

Problem Solving

Alison's journey from her house to her holiday destination took 8 hours 20 minutes in total. Half of that time she travelled by bus.

How long was she on the bus?

4 hours
10 minutes

Reveal answer



+ and -

$$372 + 400 =$$



Reveal answer

$$458 - 80 =$$



Reveal answer

× and ÷

Complete this written multiplication:

$$\begin{array}{r} 58 \\ \times 4 \\ \hline 232 \end{array}$$

Reveal answer

$$930 \div 10 =$$



Reveal answer

Reasoning

This clock says twenty to nine.



Is Alison correct?

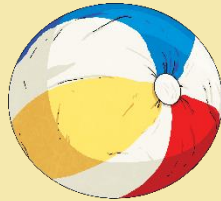
Explain why.



Place Value

Use the correct symbol to compare these numbers:

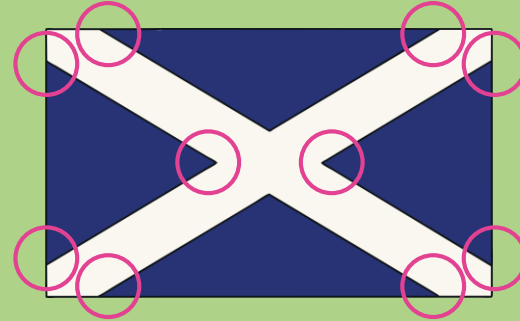
$$324 - 60 \quad \text{224} + 60$$



Reveal answer

Problem Solving

Look at the flag. Which angles are smaller than a right angle?



Reveal answer

+ and -

$$512 + 64 =$$



Reveal answer

Complete this column subtraction:

$$\begin{array}{r} 824 \\ - 581 \\ \hline 243 \end{array}$$

Reveal answer

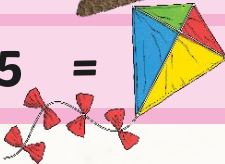
× and ÷

$$40 \times 8 =$$



Reveal answer

$$400 \div 5 =$$



Reveal answer

Reasoning

A triangle cannot have perpendicular sides.



Is Jamil correct?

Explain why.

Place Value

[Reveal answer](#)

Which numbers have a difference of 10?

348

438

338

483

433

348

and

338

+ and -

$319 + 82 =$


[Reveal answer](#)

$362 - 64 =$


[Reveal answer](#)

× and ÷

$90 \times 4 =$


[Reveal answer](#)

$770 \div 10 =$


[Reveal answer](#)

Problem Solving

Jamil arrived at the train station twenty minutes before his 11:17 train was due to leave. What time did he leave his hotel?

Hotel	08:16	09:25	10:10
Train station	08:59	10:08	10:57
Airport	09:20	10:29	11:14

[Reveal answer](#)
10:10

Reasoning

February has the same number of days as two fortnights.



Is Alison correct?

Explain why.

Place Value

Reveal answer

What are the next three numbers in this sequence?



Problem Solving

How many hours are there in 10 days?



240

Reveal answer

+ and -

Complete this column addition:

$$\begin{array}{r} 607 \\ + \text{strawberries} \\ \hline 771 \end{array}$$

Reveal answer

$$359 - 220 =$$



Reveal answer

× and ÷

$$7 \times 800 =$$



Reveal answer

$$440 \div 40 =$$



Reveal answer

Reasoning

The ice cream has been turned through a right angle clockwise.



Is Jamil correct?

Explain why.



twinkl

