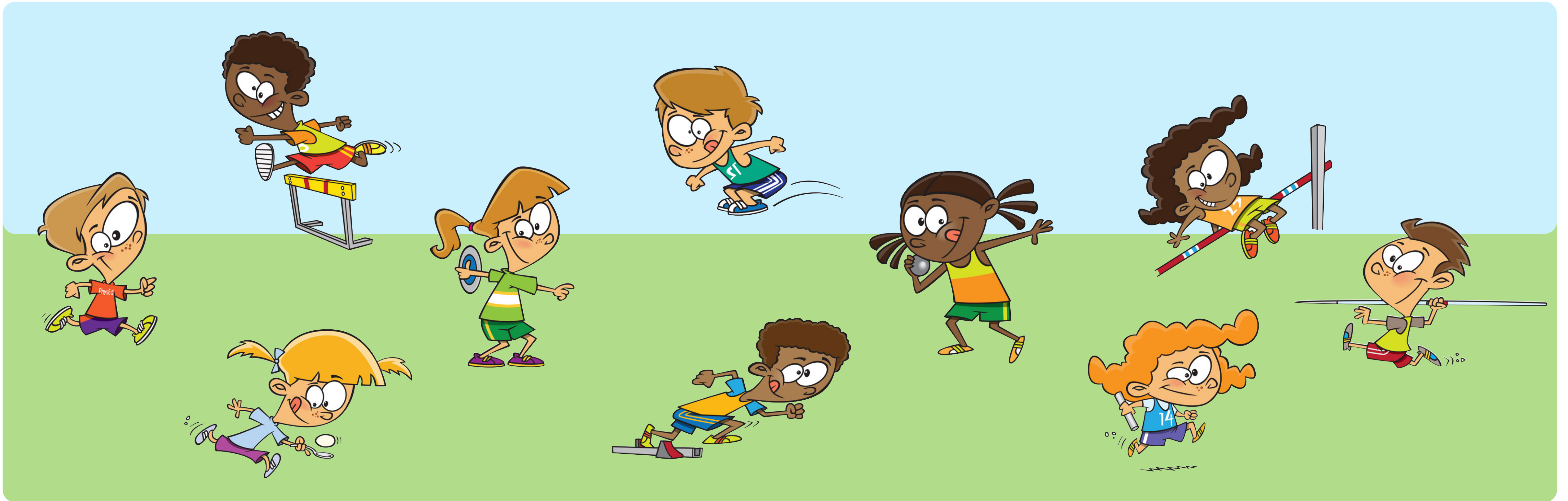


Using Addition and Subtraction 1



Learning Objective:

To recap on how to use the formal method for addition

$$553 + 224$$



How could we estimate the answer to this number sentence before working it out?

Think, pair then share your ideas.

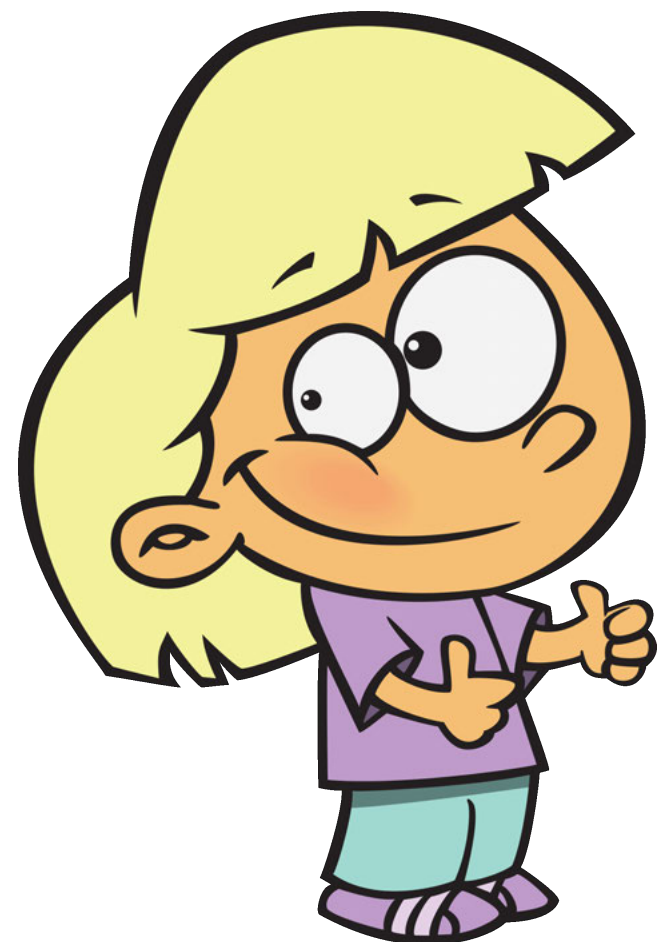
Back

Next

One method of estimating the answer is to round each number to the nearest hundred and then add them together.

$$553 + 224$$

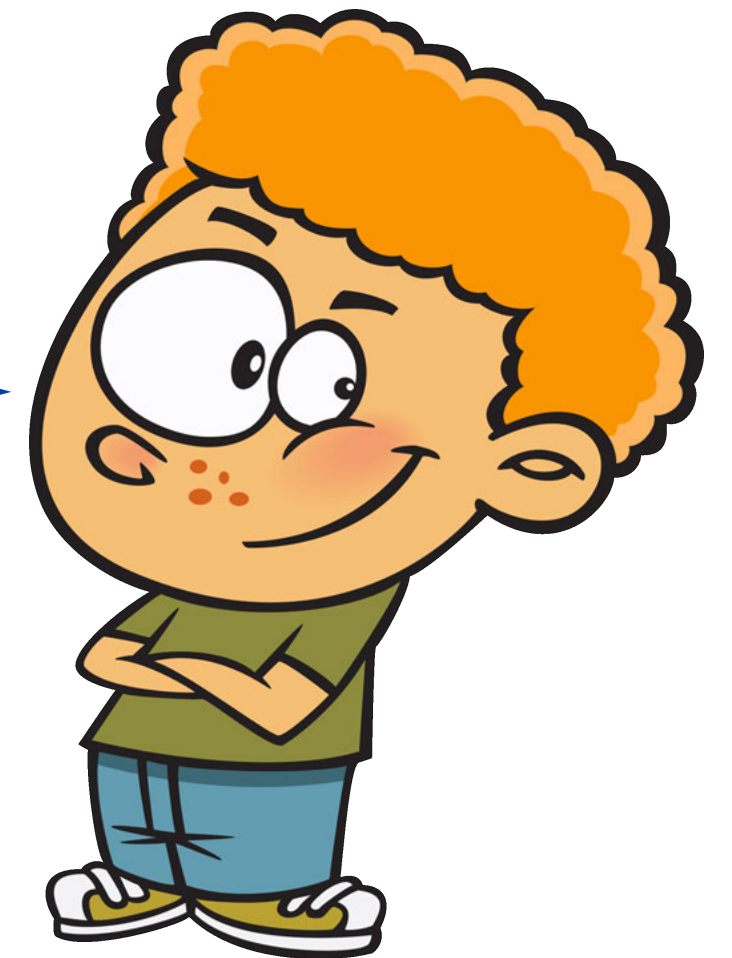
To round to the nearest 100, look at the tens digit.



If it is 5 or more,
round up to the
nearest multiple
of 100.



If it is 4 or less,
round down to
the nearest
multiple of 100.



What will the **estimated** answer be once we have rounded these numbers?

Back

Next

The tens digit in 553 is 5, so we round up to the nearest multiple of 100.



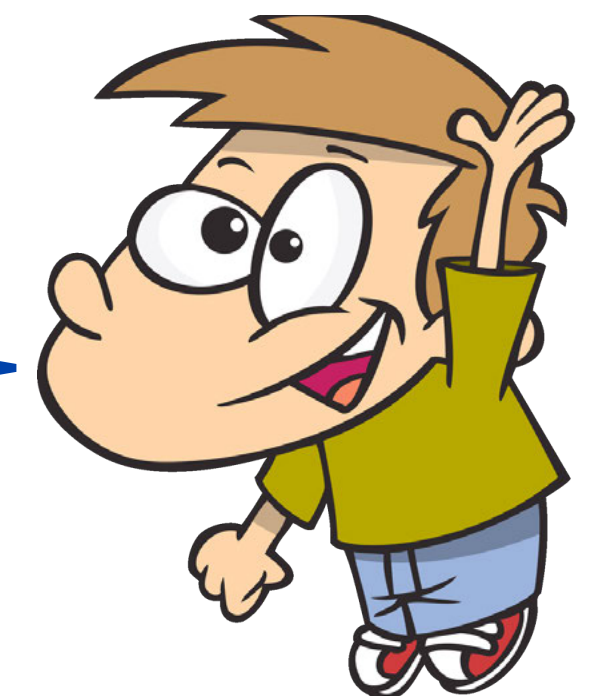
$$\underline{553} + \underline{224}$$

The tens digit in 204 is less than 5, so we round down to the nearest multiple of 100.



$$600 + 200 = 800$$

So, our estimated answer to $553 + 224$ is 800. Why does it help us to know this before we work out the actual answer?



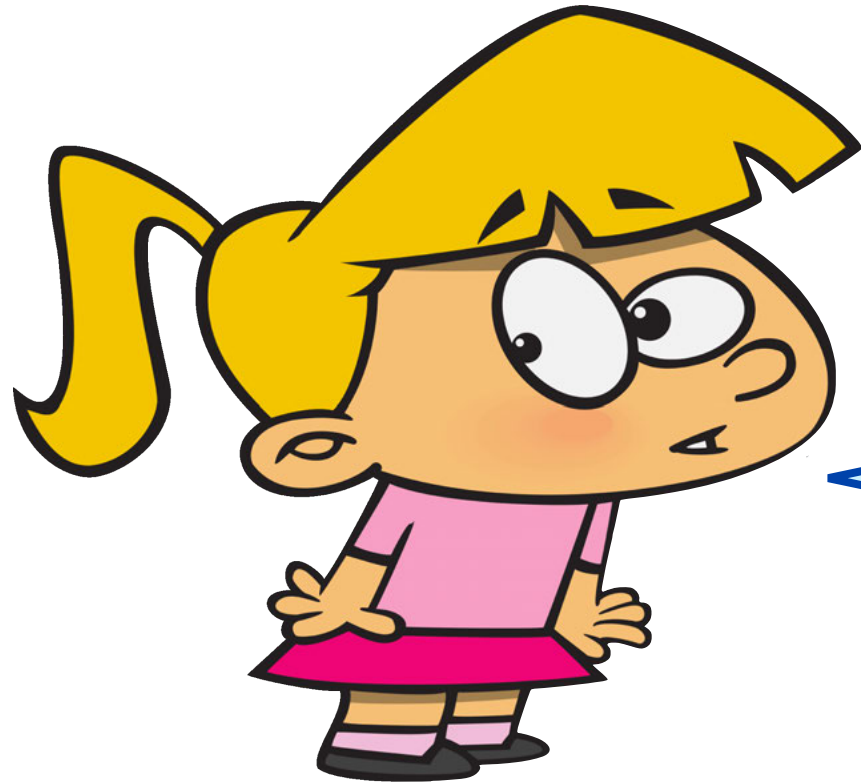
Think, pair, then share your ideas.

Back

Next

We can use our **estimated** answer to check our **actual** answer
– if it is close to it then our working out is more likely to be correct.

$$553 + 224$$



Would it be a more accurate estimate if we rounded the numbers to the nearest 100, or the nearest 10? Why?

Think, pair then share your ideas.

Back

Next

Let's see...

$$553 + 224$$

To round to the nearest ten, look at the **ones** digit.



If it is 5 or more,
round up to the
nearest multiple
of ten.



If it is 4 or less,
round down to
the nearest
multiple of ten.



What will the **estimated** answer be once we have rounded these numbers?

Back

Next

The ones digit in 553 is less than 5, so we round down to the nearest multiple of ten.



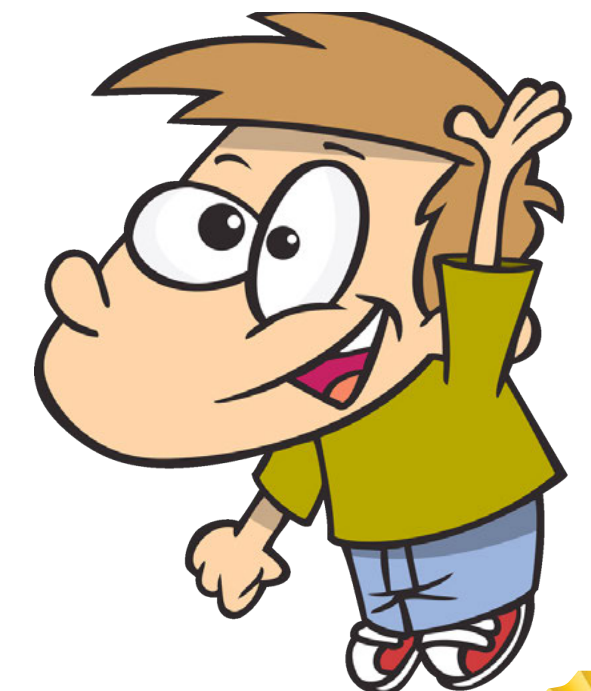
$$553 + 224$$

The ones digit in 224 is less than 5, so we round down to the nearest multiple of ten.



$$550 + 220 = 770$$

So, our estimated answer to $553 + 224$ is now 770.



Now let's work out the actual answer to the number sentence to see which estimate is more accurate...

Back

Next

There are lots of different ways we could work out the answer to this number sentence, but today we are going to focus on the **formal column method** for addition.

$$\begin{array}{r} 553 \\ + 224 \\ \hline \\ \hline \end{array}$$



With a partner, remind yourself of this method, and talk through the steps needed to solve this column addition...

Back

Next

	H	T	O
	5	5	3
+	2	2	4
<hr/>			
			7
<hr/>			

With a column addition, we always start by adding the ones digits together, and writing the answer between the lines directly in the ones column.

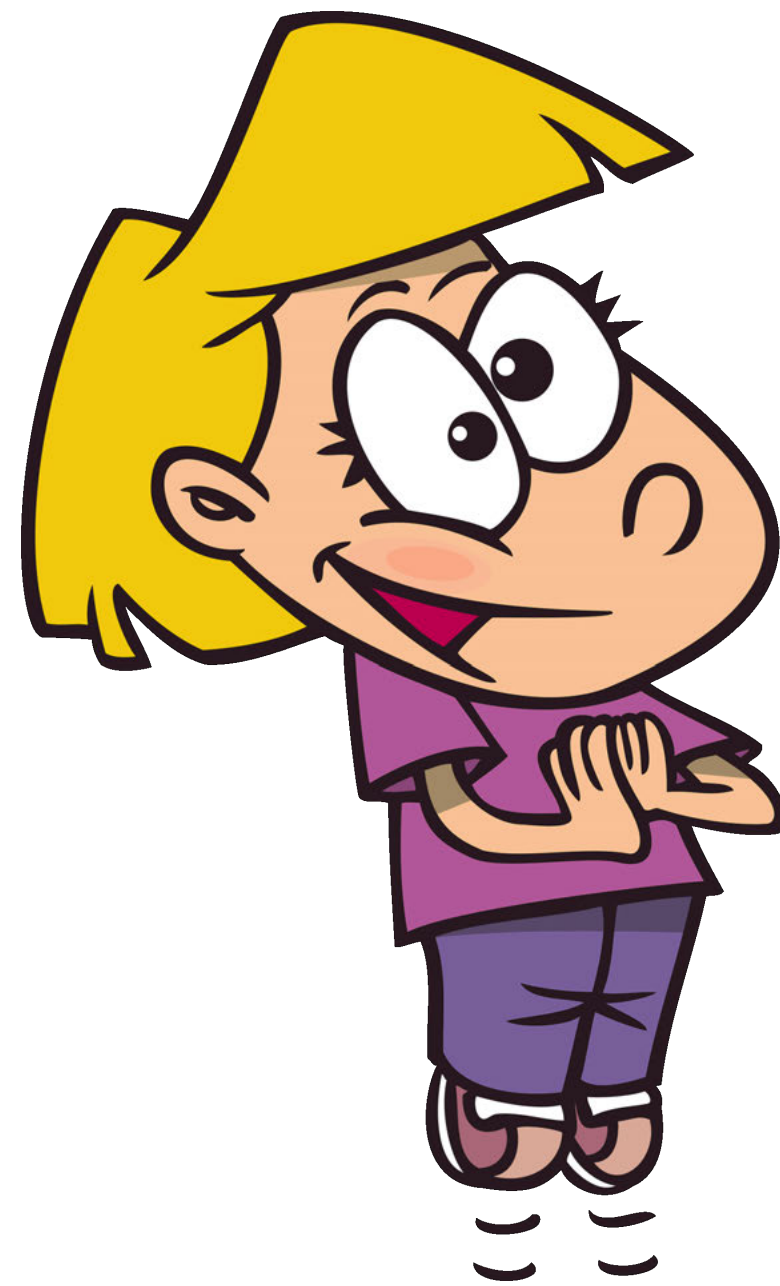


What will the next step be? Think, pair, then share your ideas.

Back

Next

	H	T	O
	5	5	3
+	2	2	4
<hr/>			
		7	7
<hr/>			



The second step is to add the tens digits together, and write this answer between the lines directly in the tens column.

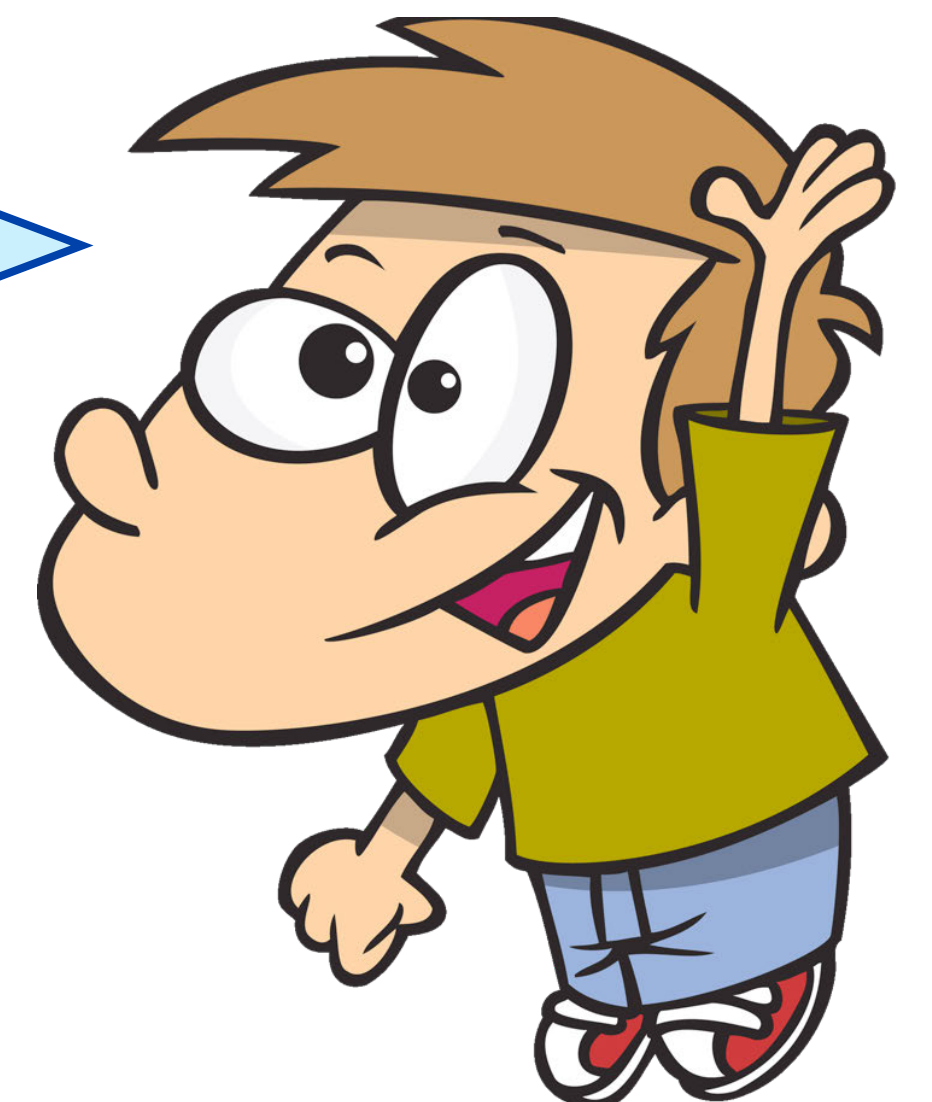
What will the next step be? Think, pair, then share your ideas.

Back

Next

	H	T	O
	5	5	3
+	2	2	4
<hr/>			
	7	7	7
<hr/>			

The final step is to add the hundreds digits together, and write this answer between the lines directly in the hundreds column.



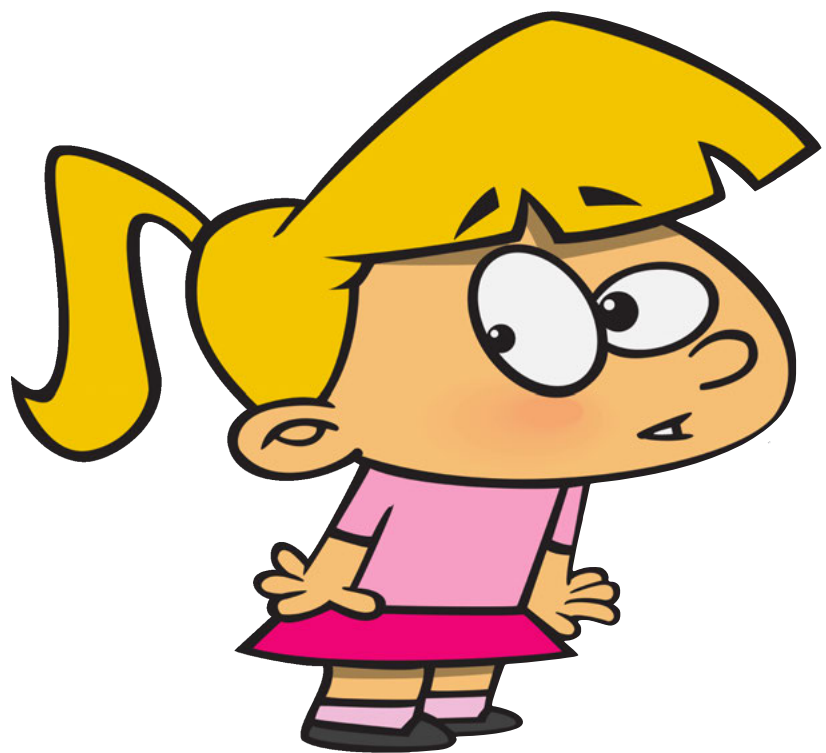
Which of our **estimated** answers was the most accurate?

Back

Next

When we rounded the numbers in the sentence to the nearest **100**, our estimated answer was **800**.

When we rounded the numbers in the sentence to the nearest **10**, our estimated answer was **770**.



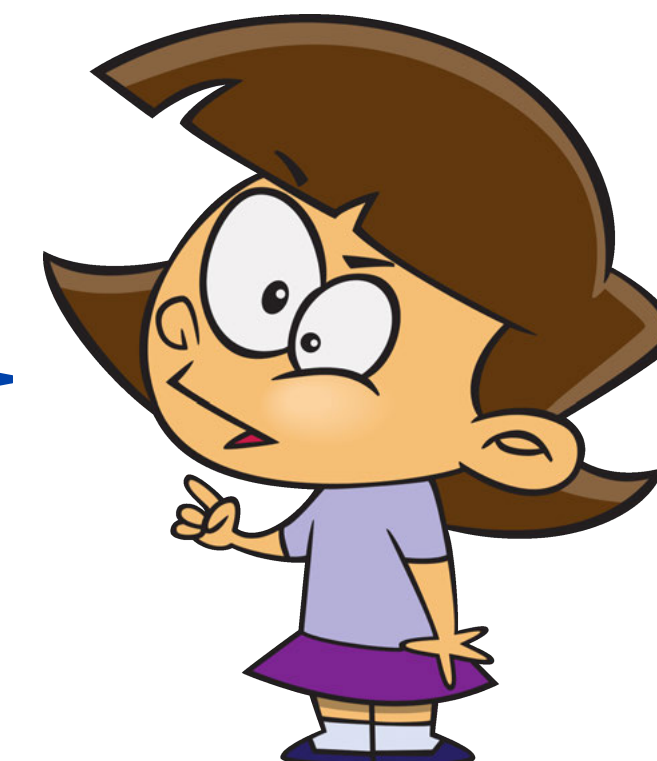
In most cases, rounding to the nearest **ten** will give you a more accurate estimate.

Let's look at some more number sentences...

Back

Next

With a partner, first **estimate** the answers by rounding (to the nearest 10 and 100), then work out the **actual** answer using the column method.



Estimates

To nearest 100:

To nearest 10:

$$\begin{array}{r} 352 \\ + 515 \\ \hline \end{array}$$

Estimates

To nearest 100:

To nearest 10:

$$\begin{array}{r} 471 \\ + 208 \\ \hline \end{array}$$

Estimates

To nearest 100:

To nearest 10:

$$\begin{array}{r} 656 \\ + 142 \\ \hline \end{array}$$

Back

Next



Did you work them out correctly? Did your estimates help you to make sure your answer was right?

Estimates

To nearest 100: 900

To nearest 10: 870

$$\begin{array}{r} 352 \\ + 515 \\ \hline 867 \end{array}$$

Back

Estimates

To nearest 100: 700

To nearest 10: 680

$$\begin{array}{r} 471 \\ + 208 \\ \hline 679 \end{array}$$

www.planbee.com

Estimates

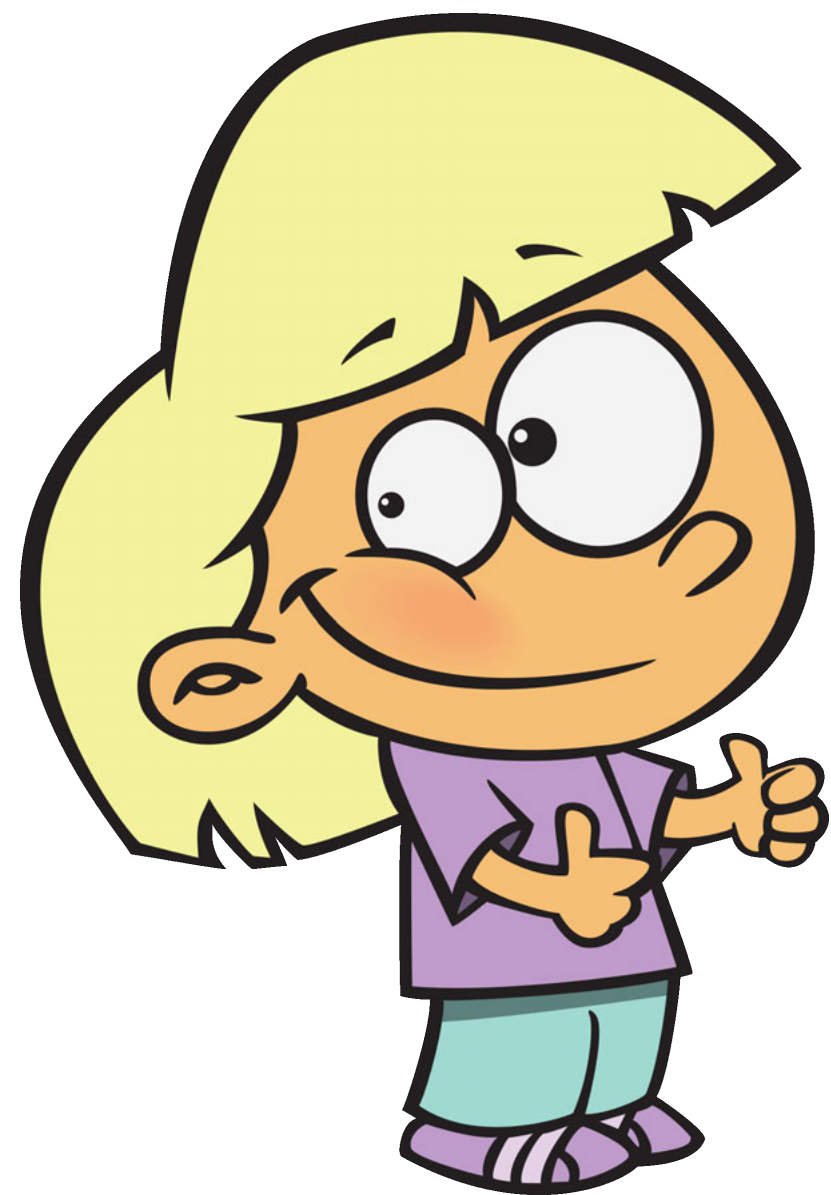
To nearest 100: 800

To nearest 10: 800

$$\begin{array}{r} 656 \\ + 142 \\ \hline 798 \end{array}$$

Next

Now we are going to look at some slightly trickier addition number sentences using the formal column method. Look at this one:



First, **estimate** the answer by rounding to the nearest ten or hundred, and remember your answer or jot it down somewhere.

	H	T	O
	6	5	8
+	2	2	6
<hr/>			
<hr/>			

Back

Next

Now let's begin to work it out..



I've started with the digits in the ones column, but they add together to give a two-digit number! What do I do?

	H	T	O
	6	5	8
+	2	2	6

Think, pair, then share your ideas.

Back

Next

The numbers in the ones column add up to give a total of **14** (one ten and four ones).

We can only put the ones digit from 14 in the ones column.

We put the tens digit from 14 **under the line** in the tens column, to add to the other tens in the next step.

	H	T	O
	6	5	8
+	2	2	6
<hr/>			
			4
<hr/>			
		1	

Now I understand!



Back

Next

Here's a rhyme that might help you remember what to do for other similar column additions:

If the answer's more than nine,
Put the tens digit under the line!

Pass it on, but...
Don't forget to add it on!



Back

Next



Do I put seven or eight as the tens column total? Can you explain why?

	H	T	O
	6	5	8
+	2	2	6
			4
		1	

Think, pair, then share your ideas.

Back

Next

The tens column total should be **eight**,
as we need to add the **one** ten under
the answer line to the **five** tens and
two tens above the answer line.

$$1 + 5 + 2 = 8$$

H	T	O
6	5	8
+	2	6
<hr/>		
	8	4
<hr/>		
	1	



Got it! Can you help me
complete the final part of the
column addition?

Back

Next

The final answer is 884.



Look back at your estimated answer – how close is it to the actual answer? Does this mean our working out is correct?

	H	T	O
	6	5	8
+	2	2	6
<hr/>			
	8	8	4
<hr/>			
		1	

Let's look at some more addition number sentences...

Back

Next

With a partner, first **estimate** the answers to these two column additions, and then work out the **actual** answers.

	H	T	O
	2	6	5
+	5	1	7
<hr/>			
<hr/>			

Remember my helpful
rhyme...

If the answer's more than nine,
Put the tens digit under the line!
Pass it on, but...
Don't forget to add it on!



	H	T	O
	3	8	5
+	3	2	3
<hr/>			
<hr/>			

Back

Use your estimated answer to check your result.

Next

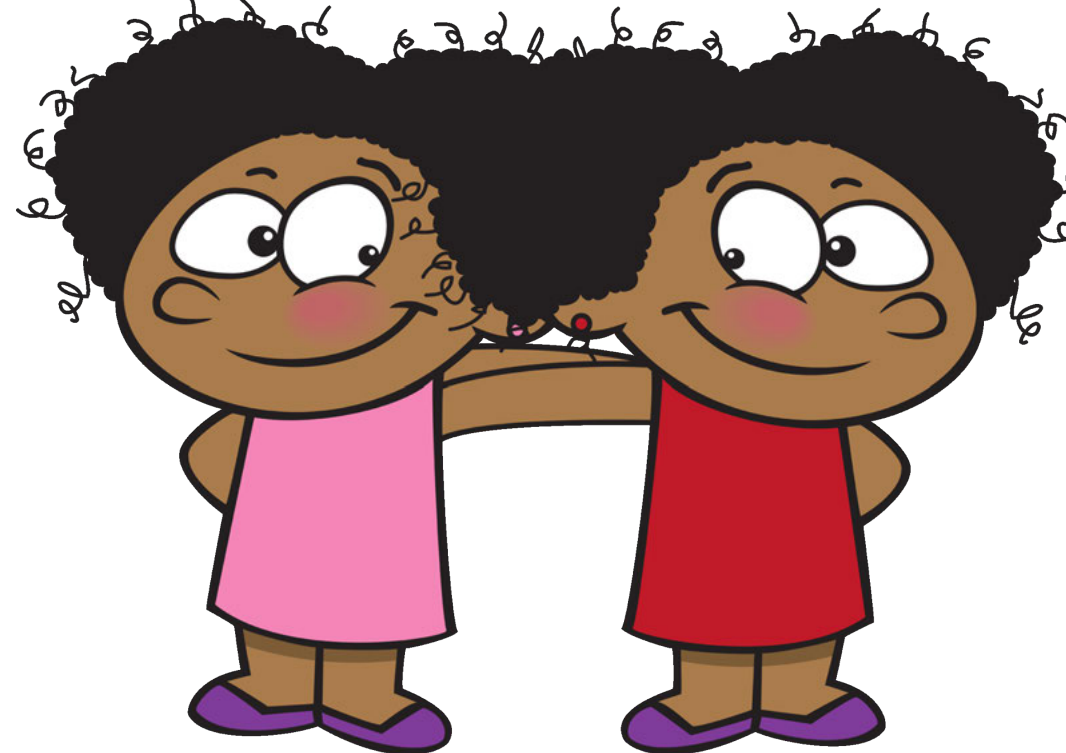
Did you get these answers? Well done!

	H	T	O
	2	6	5
+	5	1	7
<hr/>			
	7	8	2
			1

Can you explain
why the tens
column total is
eight?

Can you explain
why there is a
zero in the
tens column
answer?

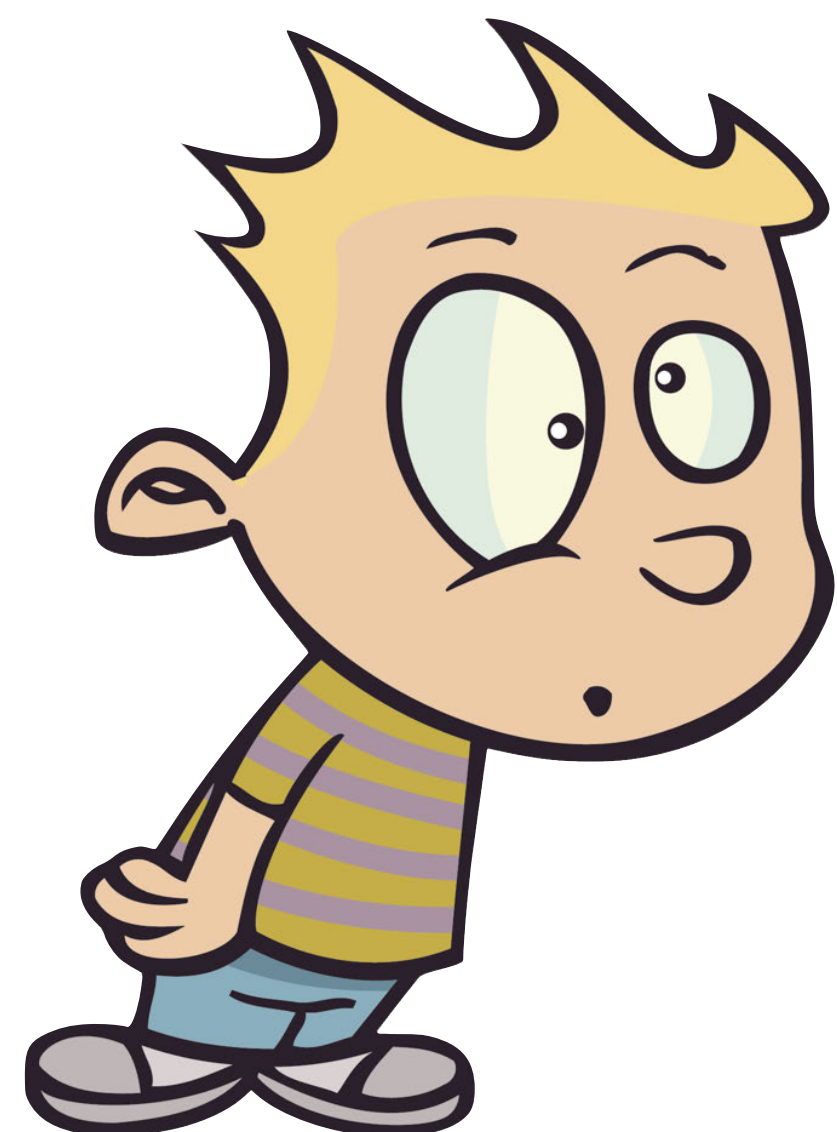
	H	T	O
	3	8	5
+	3	2	3
<hr/>			
	7	0	8
			1



Back

Next

Let's have a look at this column addition...



I don't understand how to complete my answer!

I added the hundreds column which gave me a number bigger than nine, so I put the ones digit from this answer in the hundreds column, and put the tens digit from this answer under the line.

But... there is nothing to add it to! What do I do?

	Th	H	T	O
		8	6	2
+		4	3	5
<hr/>				
		2	9	7
<hr/>				
	1			

Back

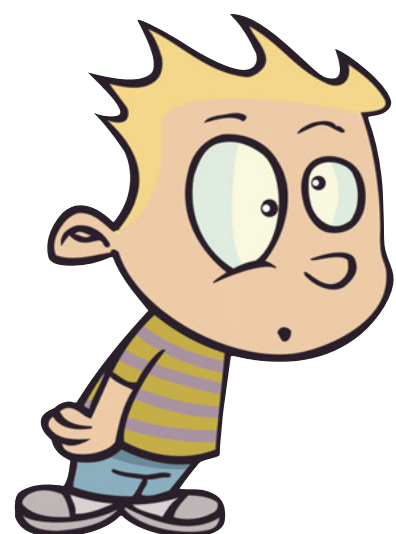
Next

When the numbers in the **final** column add up to more than nine, there is no need to follow the rhyme by putting the tens digit under the line!



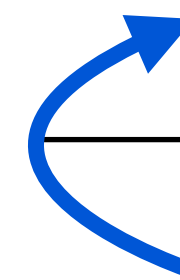
Oh dear! Maybe I should write a new rhyme...

All you need to do is put the digit in the column to the left of the hundreds answer. In this case, this is the **thousands** column.

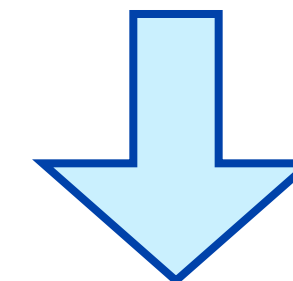


Now I understand!

	Th	H	T	O
		8	6	2
+		4	3	5
<hr/>				
		2	9	7



1



	Th	H	T	O
		8	6	2
+		4	3	5
<hr/>				
	1	2	9	7

Back

Next

Let's check your understanding of this by looking at some more examples...

Th H T O

7 2 3

+ 9 6 5

Th H T O

5 0 1

+ 8 6 4

Th H T O

5 4 2

+ 6 4 7



Can you solve these column additions with a partner?

Back

Next

For the final step of each of these column additions, no numbers need to be put under the line – they can each be placed to the left of the hundreds answer, in the thousands column.

	Th	H	T	O
		7	2	3
+		9	6	5
<hr/>				
	1	6	8	8
<hr/>				

	Th	H	T	O
		5	0	1
+		8	6	4
<hr/>				
	1	3	6	5
<hr/>				

	Th	H	T	O
		5	4	2
+		6	4	7
<hr/>				
	1	1	8	9
<hr/>				



Did you get them all correct? Excellent work!

Back

Next

Now that you have refreshed your memory of using the formal column method for addition, you are going to help work out some points from a school sports day!



Back

Next

Plenary:



All of these answers are incorrect, as an error has been made somewhere in the working out. Can you find where the mistake has been made in each one?

$$\begin{array}{r} 429 \\ + 366 \\ \hline 7815 \end{array}$$

$$\begin{array}{r} 238 \\ + 545 \\ \hline 773 \\ 1 \end{array}$$

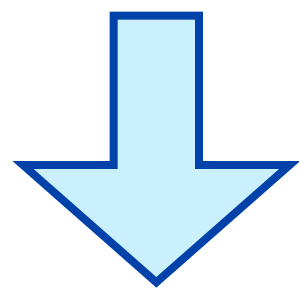
$$\begin{array}{r} 394 \\ + 482 \\ \hline 776 \\ 1 \end{array}$$

What should the answers be?

Back

Next

$$\begin{array}{r} 429 \\ + 366 \\ \hline 7815 \end{array}$$

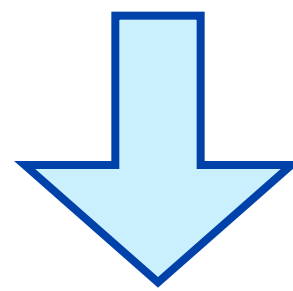


The tens digit should have been put under the next column to the left.

$$\begin{array}{r} 429 \\ + 366 \\ \hline 795 \end{array}$$

1

$$\begin{array}{r} 238 \\ + 545 \\ \hline 773 \\ 1 \end{array}$$

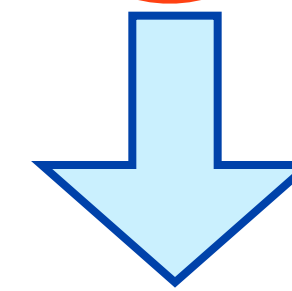


The one ten under the line should have been added to the rest of the column.

$$\begin{array}{r} 238 \\ + 545 \\ \hline 783 \end{array}$$

1

$$\begin{array}{r} 394 \\ + 482 \\ \hline 776 \\ 1 \end{array}$$



The one ten has been put under the incorrect column, and so it has not been included in the addition.

$$\begin{array}{r} 394 \\ + 482 \\ \hline 876 \end{array}$$

1

Back