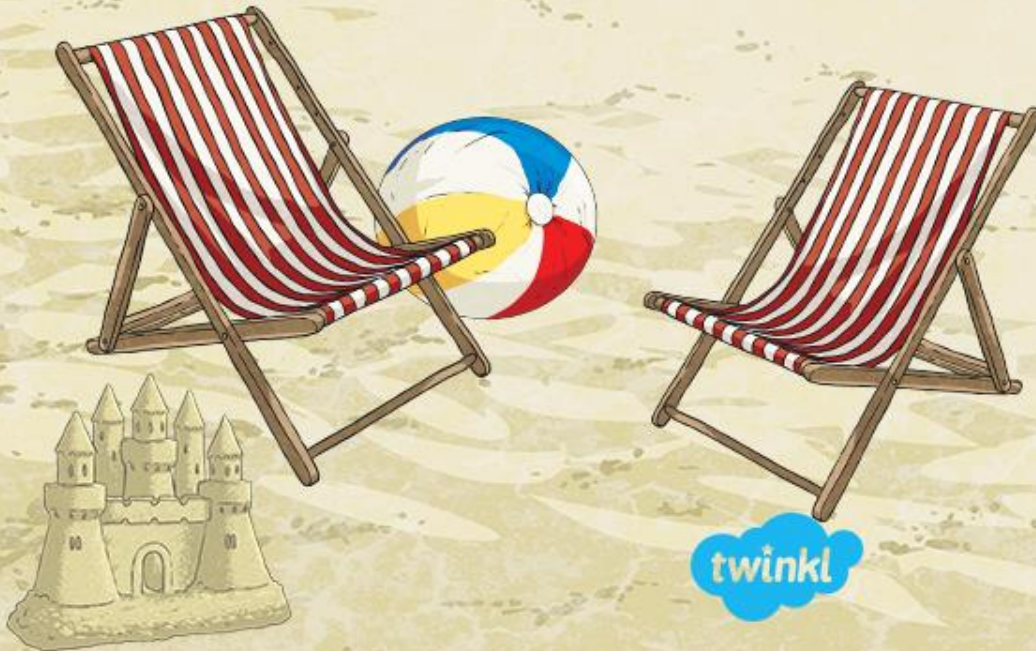


Summer Week 1



Fluency, Reasoning and Problem-Solving

Morning Starter



twinkl



Monday

Tuesday

Wednesday

Thursday

Friday



Place Value

Write 548 in words.



Reveal answer

Problem Solving

How much money in total?



£4 and 43 pence
Reveal answer

+ and -

$$78 + 28 =$$



Reveal answer

$$630 - 60 =$$



Reveal answer

× and ÷

$$7 \times 3 =$$



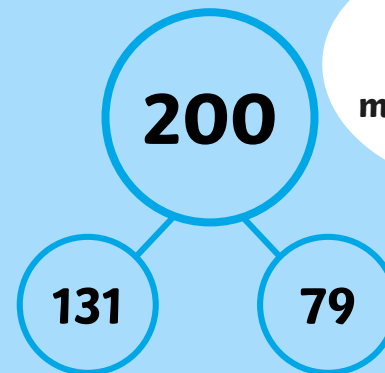
Reveal answer

$$30 \div 3 =$$



Reveal answer

Reasoning



Is my part-whole model correct?



Explain why.

Place Value

How many if I have
one hundred more?

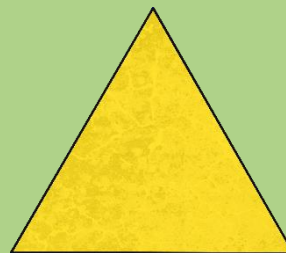
598



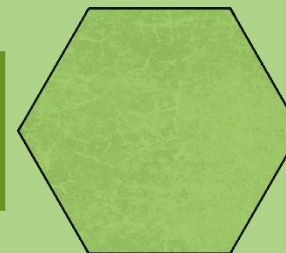
Reveal answer

Problem Solving

How many sides are there in total?



9



Reveal answer

+ and -

$$85 + 50 =$$



Reveal answer

$$430 - 25 =$$



Reveal answer

× and ÷

$$5 \times 3 =$$



Reveal answer

$$24 \div 3 =$$



Reveal answer

Reasoning

If I count in
multiples of
eight, I will say
the number 32.

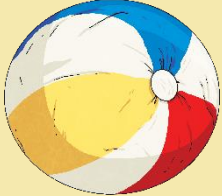
Is Alison correct?

Explain why.



Place Value

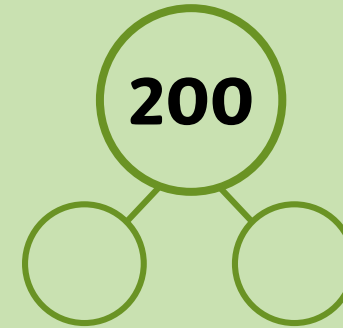
Use the correct symbol to compare these numbers:

508  580

Reveal answer

Problem Solving

Find three different ways to complete this part whole model.



+ and -

$$264 + 6 =$$



Reveal answer

$$256 - 8 =$$



Reveal answer

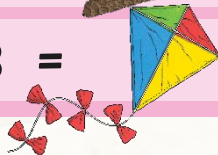
× and ÷

$$4 \times 3 =$$



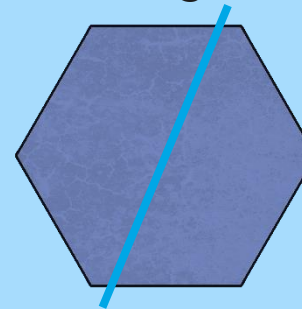
Reveal answer

$$15 \div 3 =$$



Reveal answer

Reasoning



I have drawn a line of symmetry on this hexagon.



Is Henry correct?

Explain why.

Place Value

Reveal answer

Put these numbers in order from smallest to greatest:

533

335

353

553

555

335

353

533

553

555

+ and -



$$+ 26 = 100$$

Reveal answer

$$100 - 11 =$$



Reveal answer

× and ÷

$$8 \times 3 =$$



Reveal answer

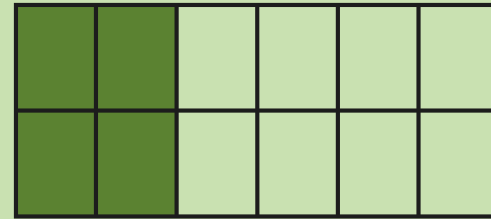
$$12 \div 4 =$$



Reveal answer

Problem Solving

How many parts of this shape need to be coloured in to show $\frac{1}{3}$?



Reveal answer

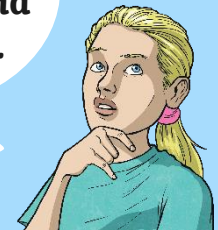
Reasoning



These coins total £4 and 60 pence.

Is Alison correct?

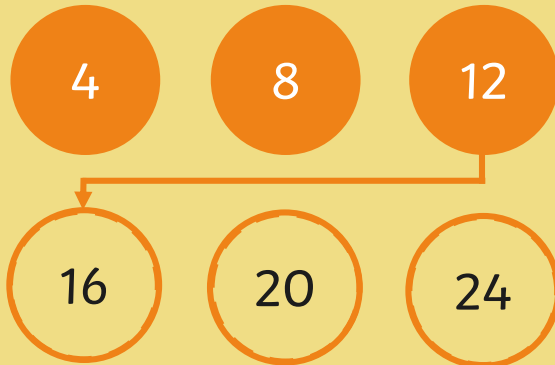
Explain why.



Place Value

Reveal answer

What are the next three numbers in this sequence?



+ and -

$6 + 7 + 8 =$



Reveal answer

$523 - 200 =$



Reveal answer

× and ÷

$11 \times 3 =$



Reveal answer

$21 \div 3 =$



Reveal answer

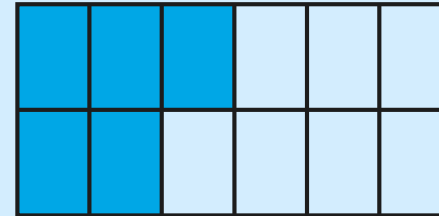
Problem Solving

How many buckets and spades did Henry find in the sandpit?

23

Reveal answer

Reasoning

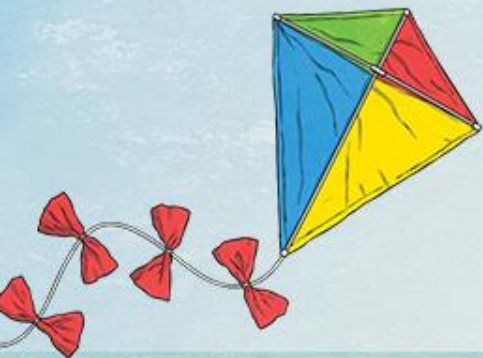


I need to colour in six more parts to make $\frac{3}{4}$.



Is Henry correct?

Explain why.



twinkl

