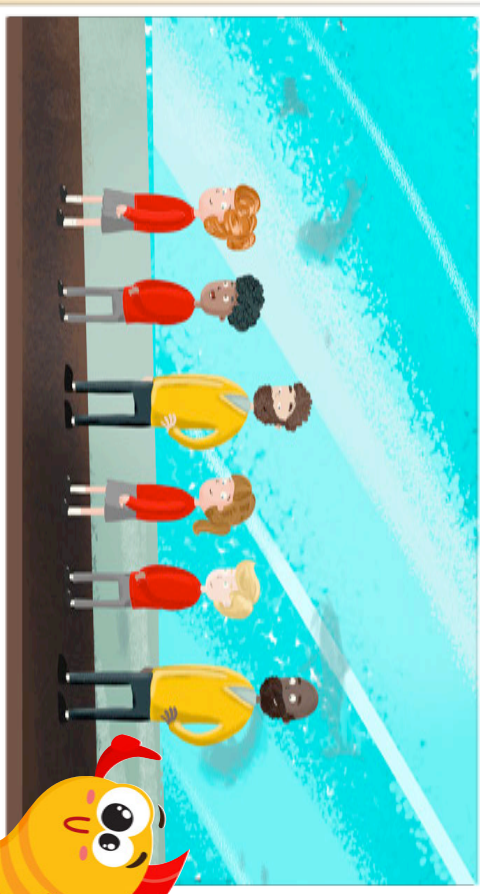


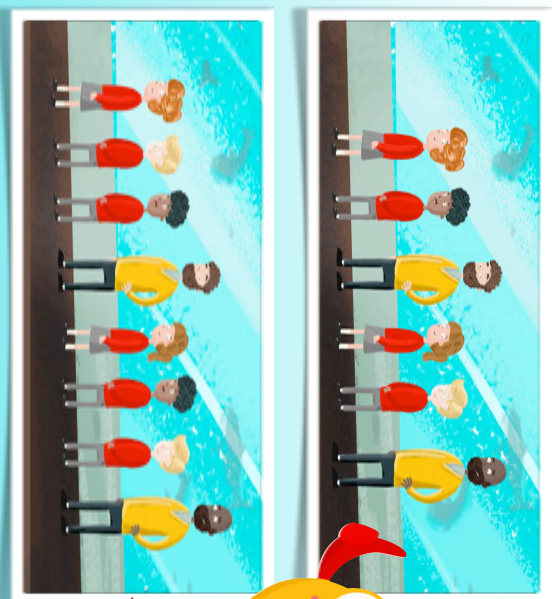
Have a look at each of these patterns. For each pattern you need to:

- Describe the pattern using the word multiple;
- Continue the pattern until there are 12 people in the queue;
- Work out if the 15th person in the queue would be an adult or a child;
- Work out if the 20th person in the queue would be an adult or a child;
- Work out if the 48th person in the queue would be an adult or a child.



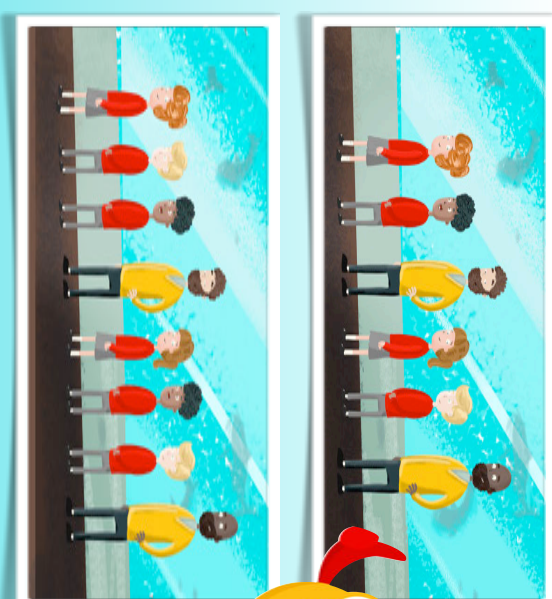
Have a look at each of these patterns. For each pattern you need to:

- Describe the pattern using the word multiple;
- Continue the pattern until there are 12 people in the queue;
- Work out if the 15th person in the queue would be an adult or a child;
- Work out if the 20th person in the queue would be an adult or a child;
- Work out if the 48th person in the queue would be an adult or a child.



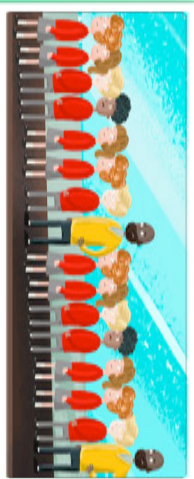
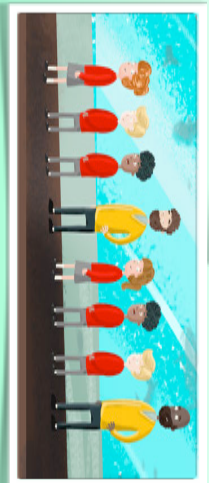
Have a look at each of these patterns. For each pattern you need to:

- Describe the pattern using the word multiple;
- Work out if the 20th person in the queue would be an adult or a child;
- Work out if the 48th person in the queue would be an adult or a child;
- Work out if the 97th person in the queue would be an adult or a child;
- If these two queues were lined up equally next to each other, what positions would have adults stood next to each other? Write down three different positions.



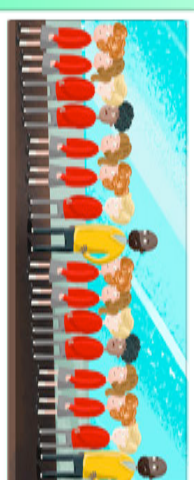
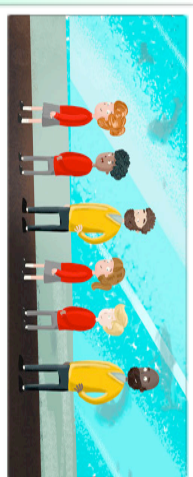
Have a look at each of these patterns. For each pattern you need to:

- Describe the pattern using the word multiple;
- Work out if the 20th person in the queue would be an adult or a child;
- Work out if the 48th person in the queue would be an adult or a child;
- Work out if the 97th person in the queue would be an adult or a child;
- If these two queues were lined up equally next to each other, what positions would have adults stood next to each other? Write down three different positions.



Have a look at each of these patterns. For each pattern you need to:

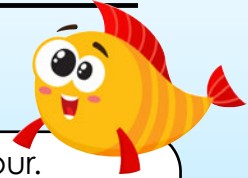
- Describe the pattern using the word multiple;
- Work out if the 20th person in the queue would be an adult or a child;
- Work out if the 48th person in the queue would be an adult or a child;
- Work out if the 97th person in the queue would be an adult or a child;
- If these three queues were lined up equally next to each other, which two positions would have adults stood next to each other in all three queues?



Have a look at each of these patterns. For each pattern you need to:

- Describe the pattern using the word multiple;
- Work out if the 20th person in the queue would be an adult or a child;
- Work out if the 48th person in the queue would be an adult or a child;
- Work out if the 97th person in the queue would be an adult or a child;
- If these three queues were lined up equally next to each other, which two positions would have adults stood next to each other in all three queues?

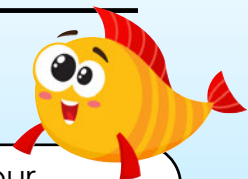
The Taming of the Queue



This game can be played in groups of two, three or four.

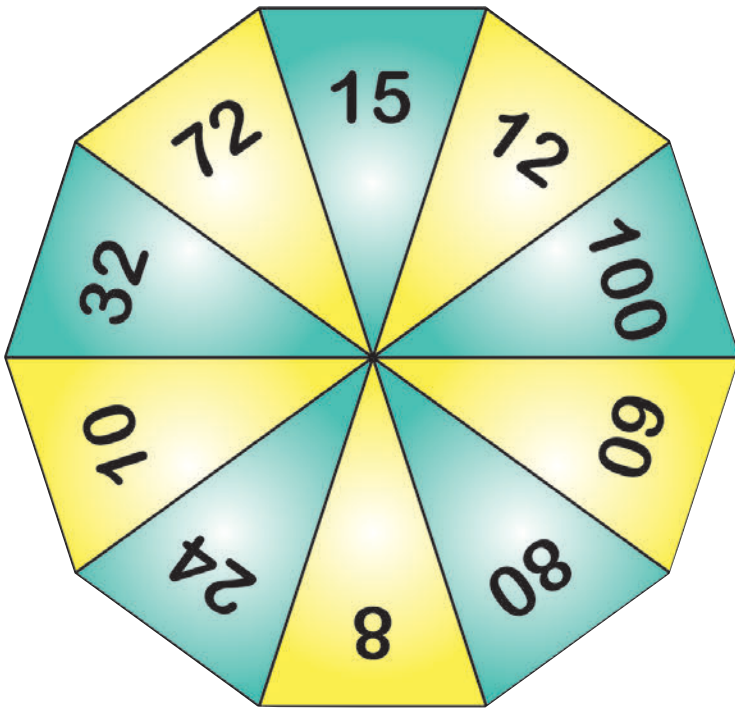
- Choose a queue to join on the game board and place your counter on the starting square for that queue.
- Take it in turns to spin the spinner to get a number.
- If the number you have spun would be a multiple of the number at the beginning of your queue, you move your counter forward one space and the next person takes their turn.
- If it is not a multiple, your counter stays where it is and the next person takes their turn.
- The winner is the person who gets to the entrance first.

The Taming of the Queue



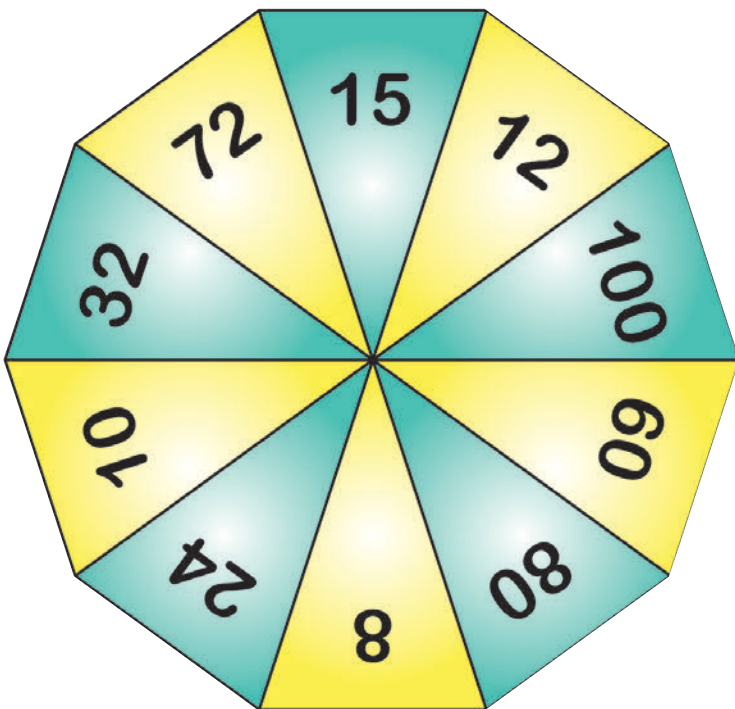
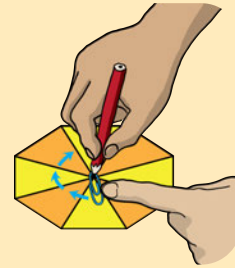
This game can be played in groups of two, three or four.

- Choose a queue to join on the game board and place your counter on the starting square for that queue.
- Take it in turns to spin the spinner to get a number.
- If the number you have spun would be an adult in your queue, you move your counter forward one space and the next person takes their turn.
- If it would be a child, your counter stays where it is and the next person takes their turn.
- The winner is the person who gets to the entrance first.



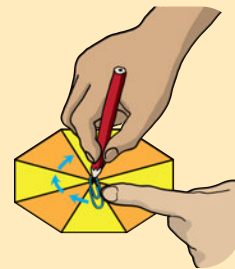
How to use a spinner

Get a pencil and a paper clip. Place the paper clip on top of the middle point of the spinner, then put a pencil through the clip so that the paper clip can spin around the pencil.



How to use a spinner

Get a pencil and a paper clip. Place the paper clip on top of the middle point of the spinner, then put a pencil through the clip so that the paper clip can spin around the pencil.



Multiplication Problems

'Tawing of the Queue' Game Board

