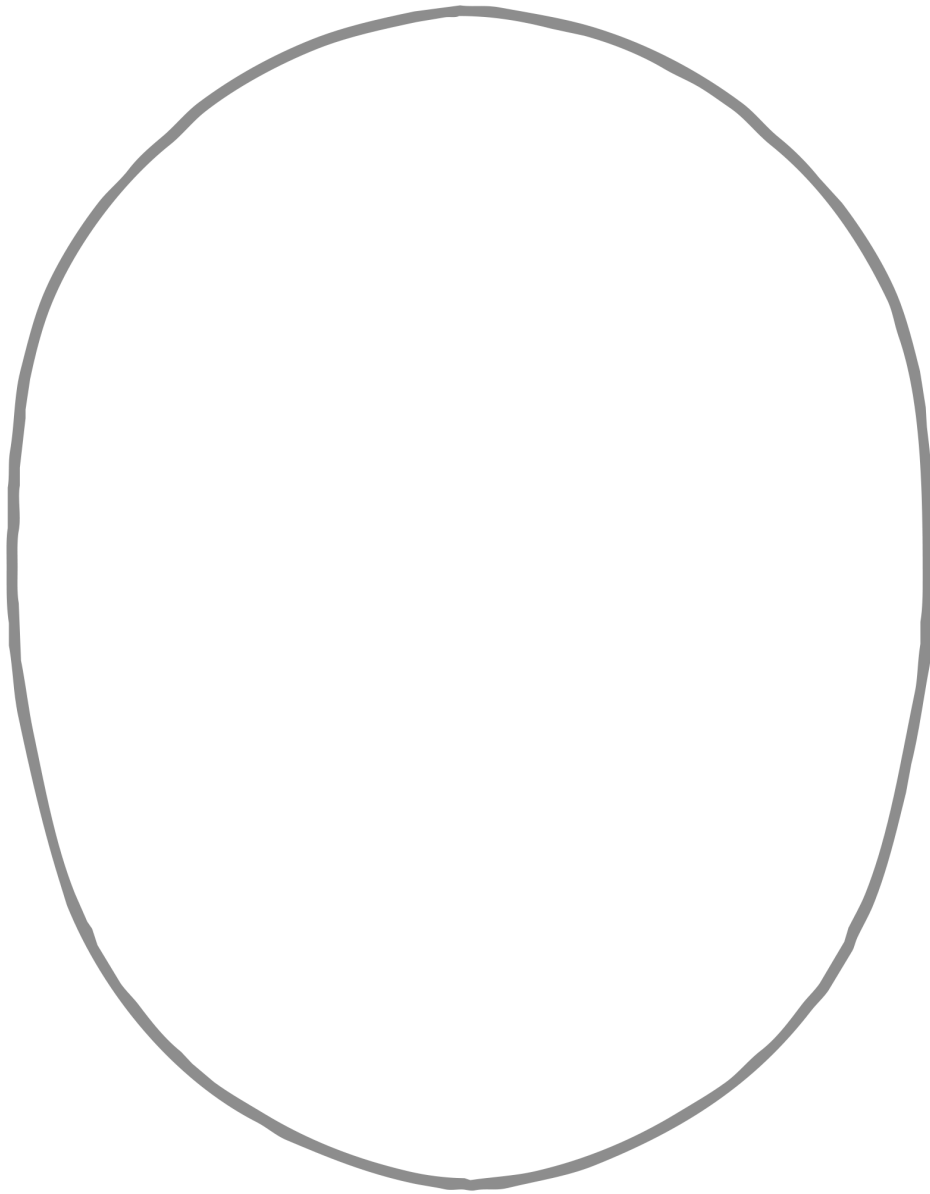


How to Draw a Face



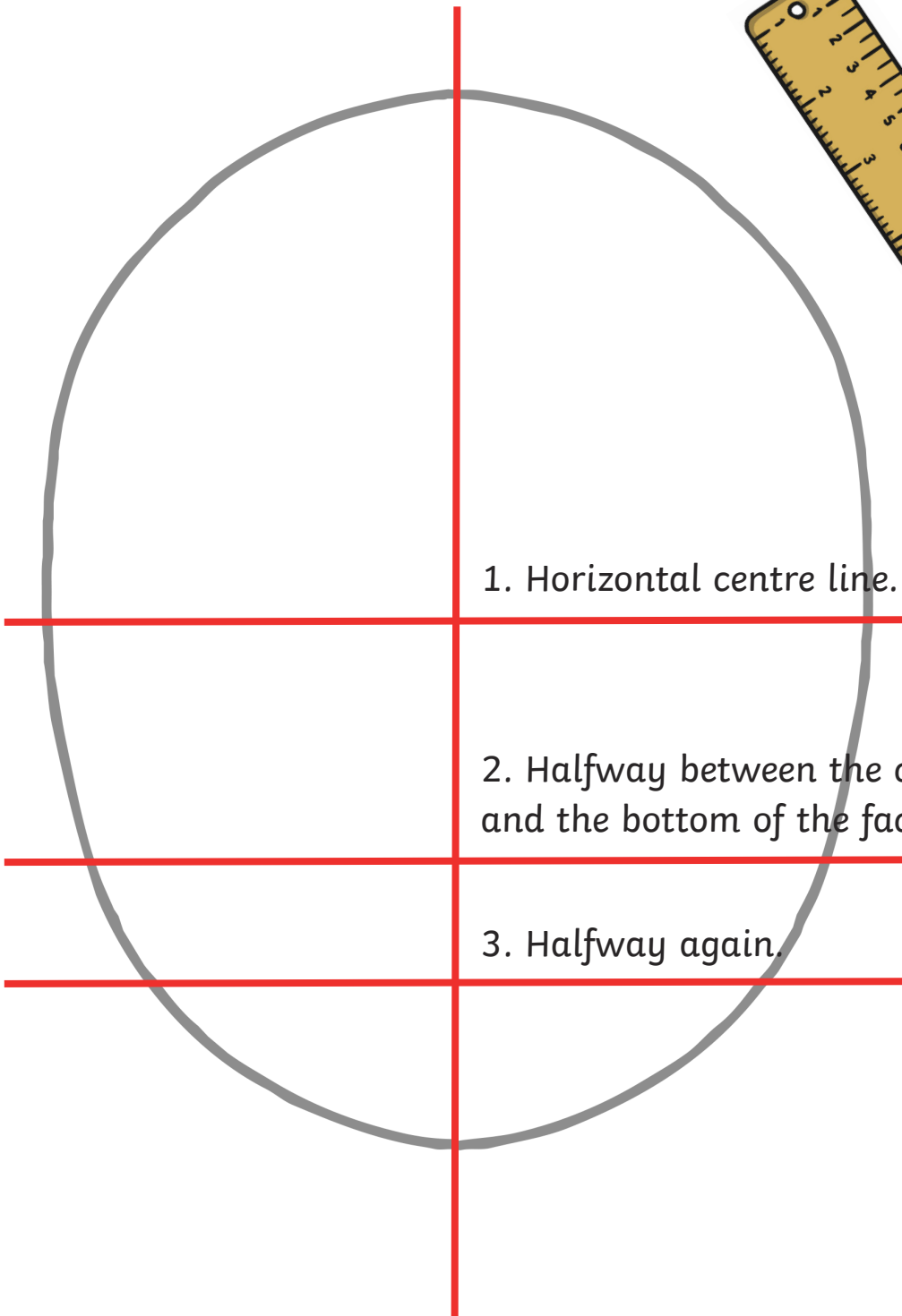
1



Draw a faint oval. You will go back over this later after you have drawn the hair.

2

1. Vertical centre line.



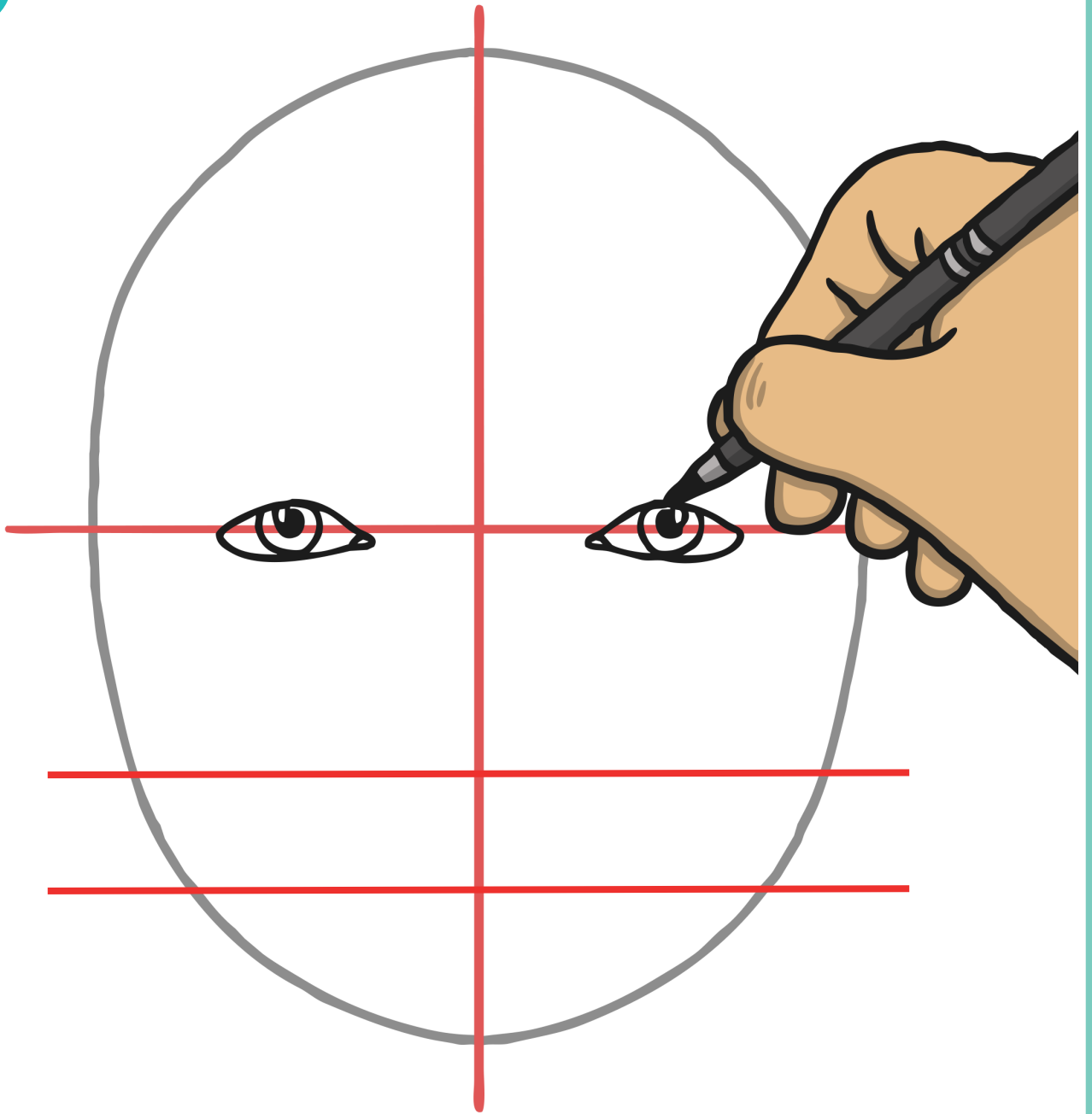
1. Horizontal centre line.

2. Halfway between the centre and the bottom of the face.

3. Halfway again.

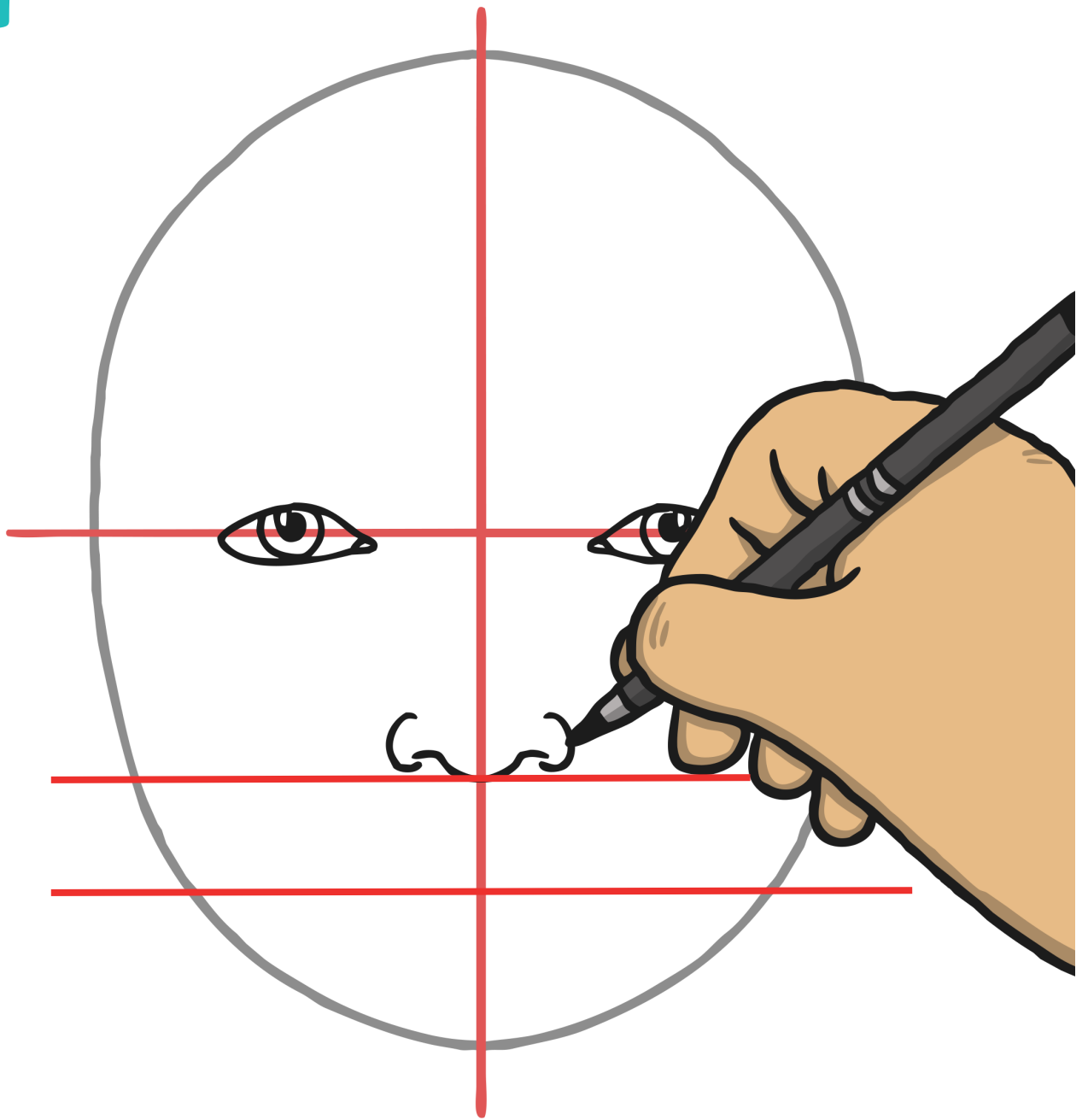
Mark some very faint guide lines with a pencil and ruler.

3



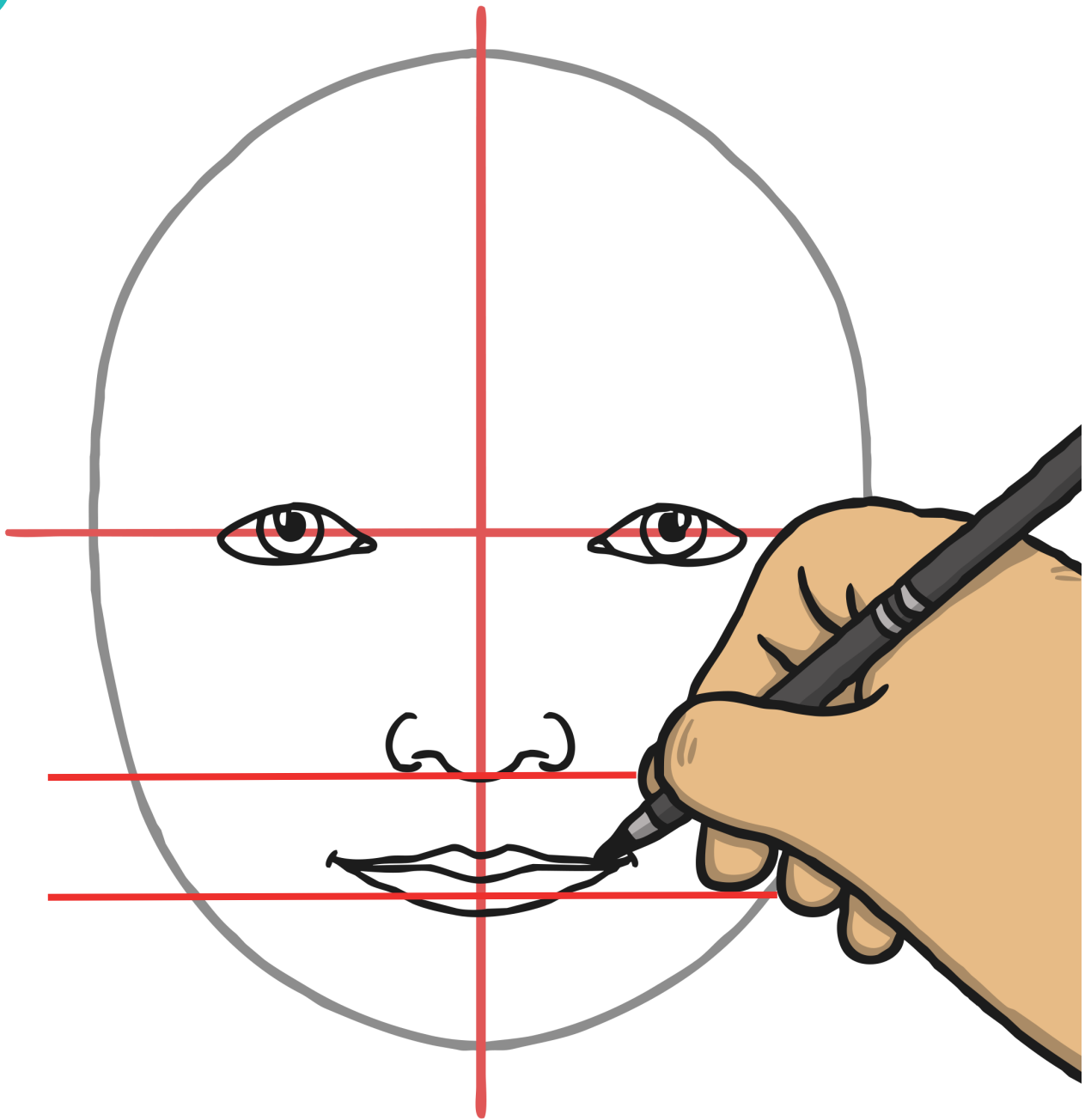
Draw the eyes.

4



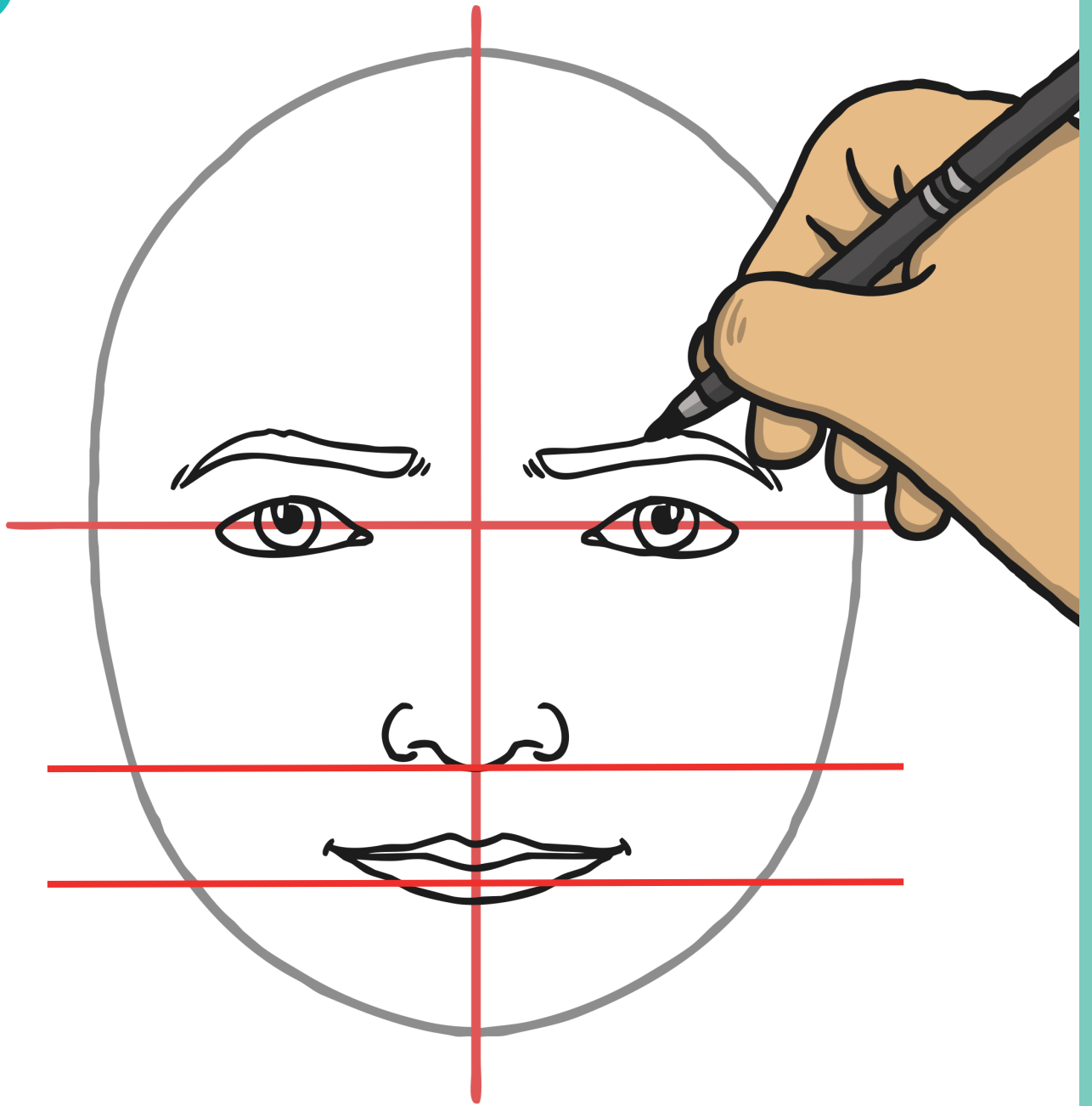
Draw the nose.

5



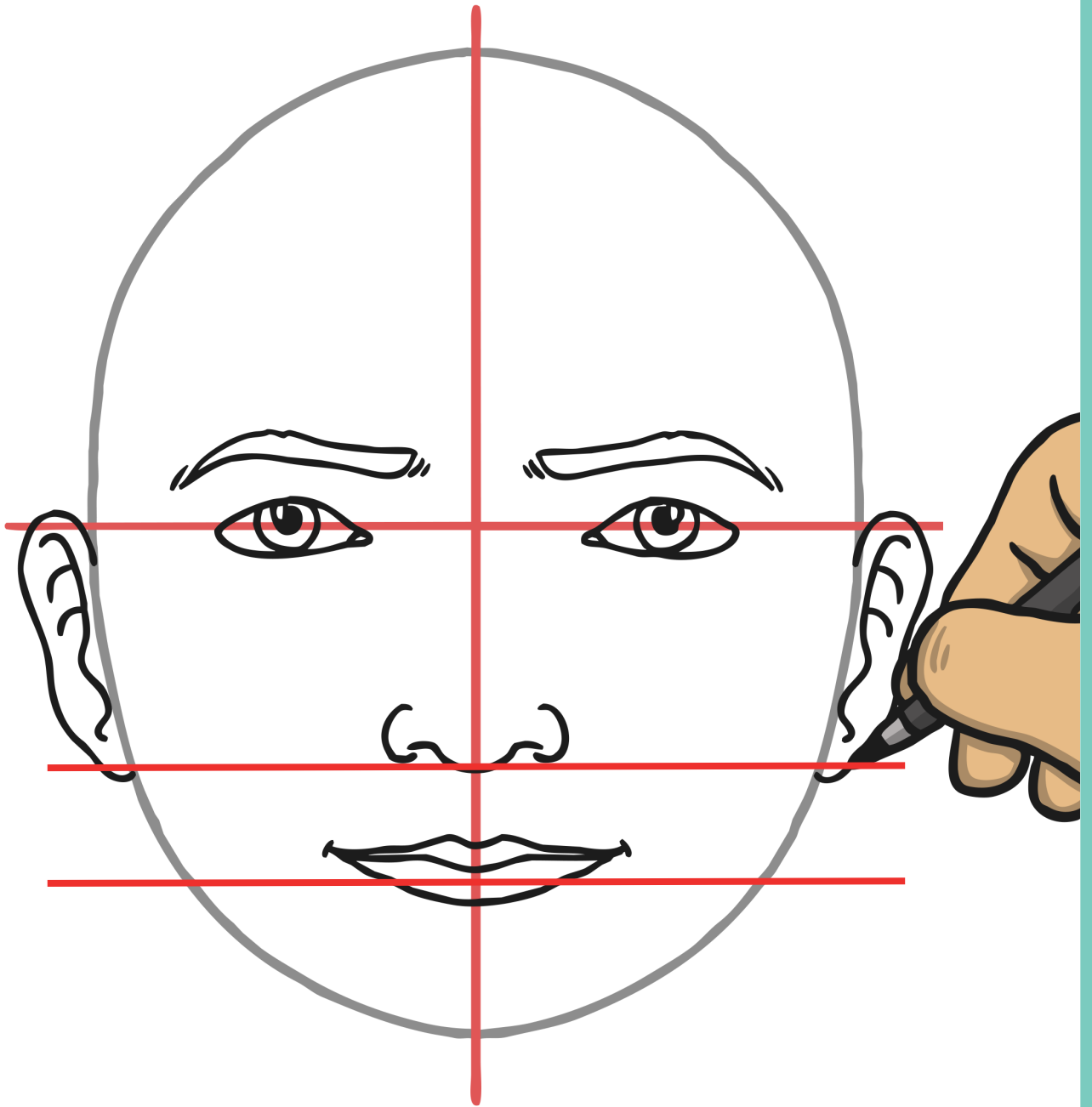
Draw the mouth.

6



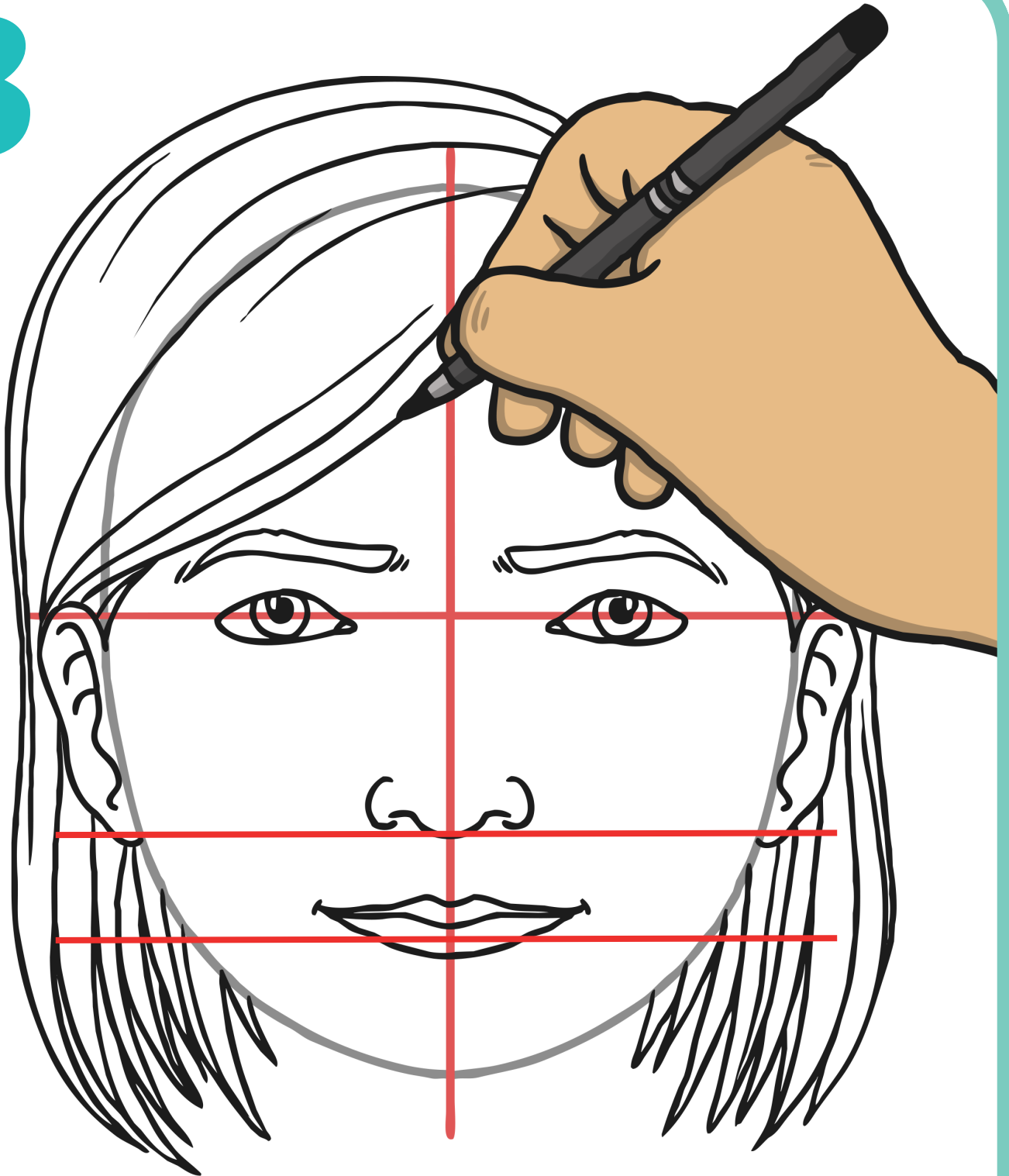
Draw the eyebrows.

7



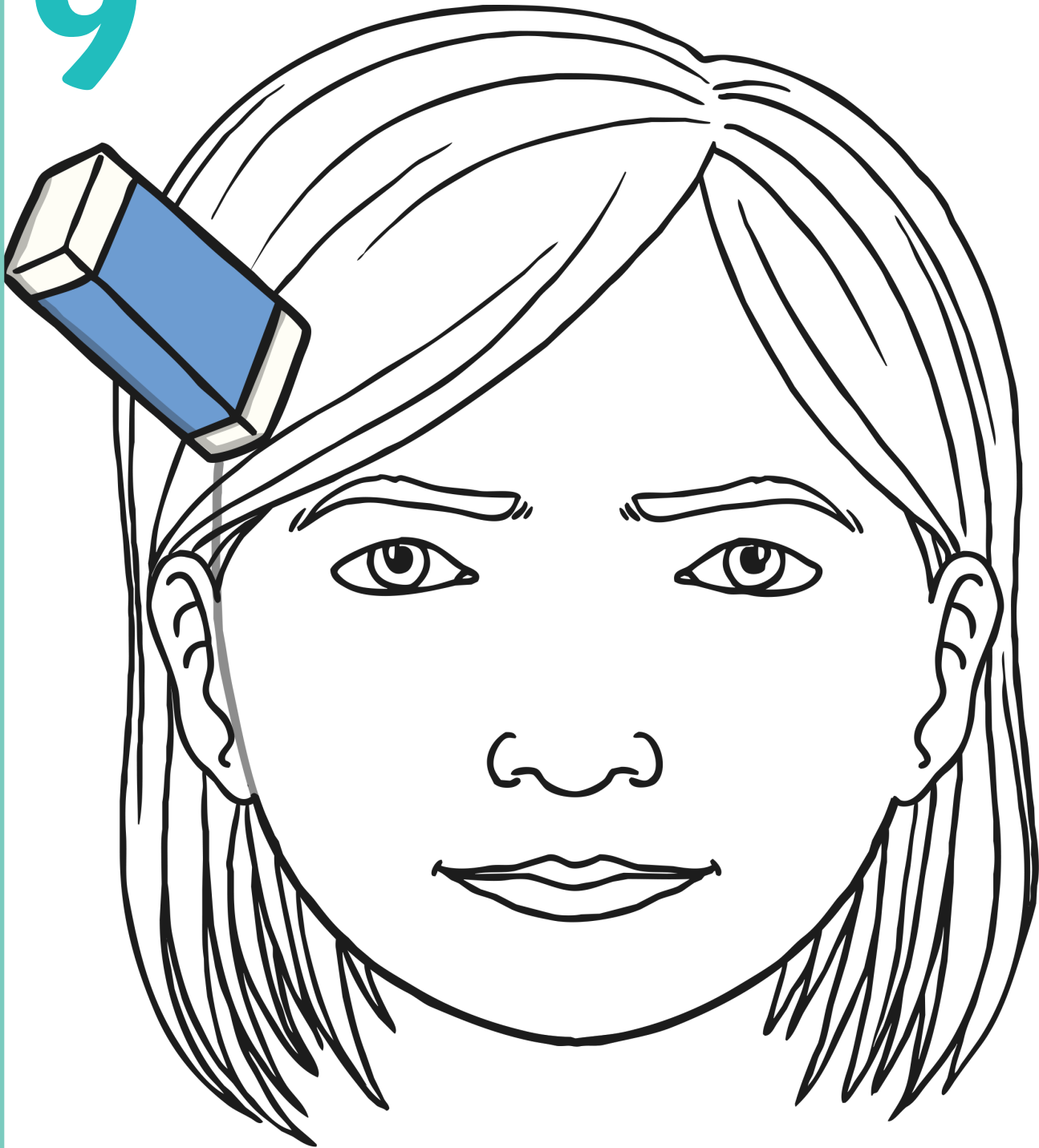
Draw the ears.

8



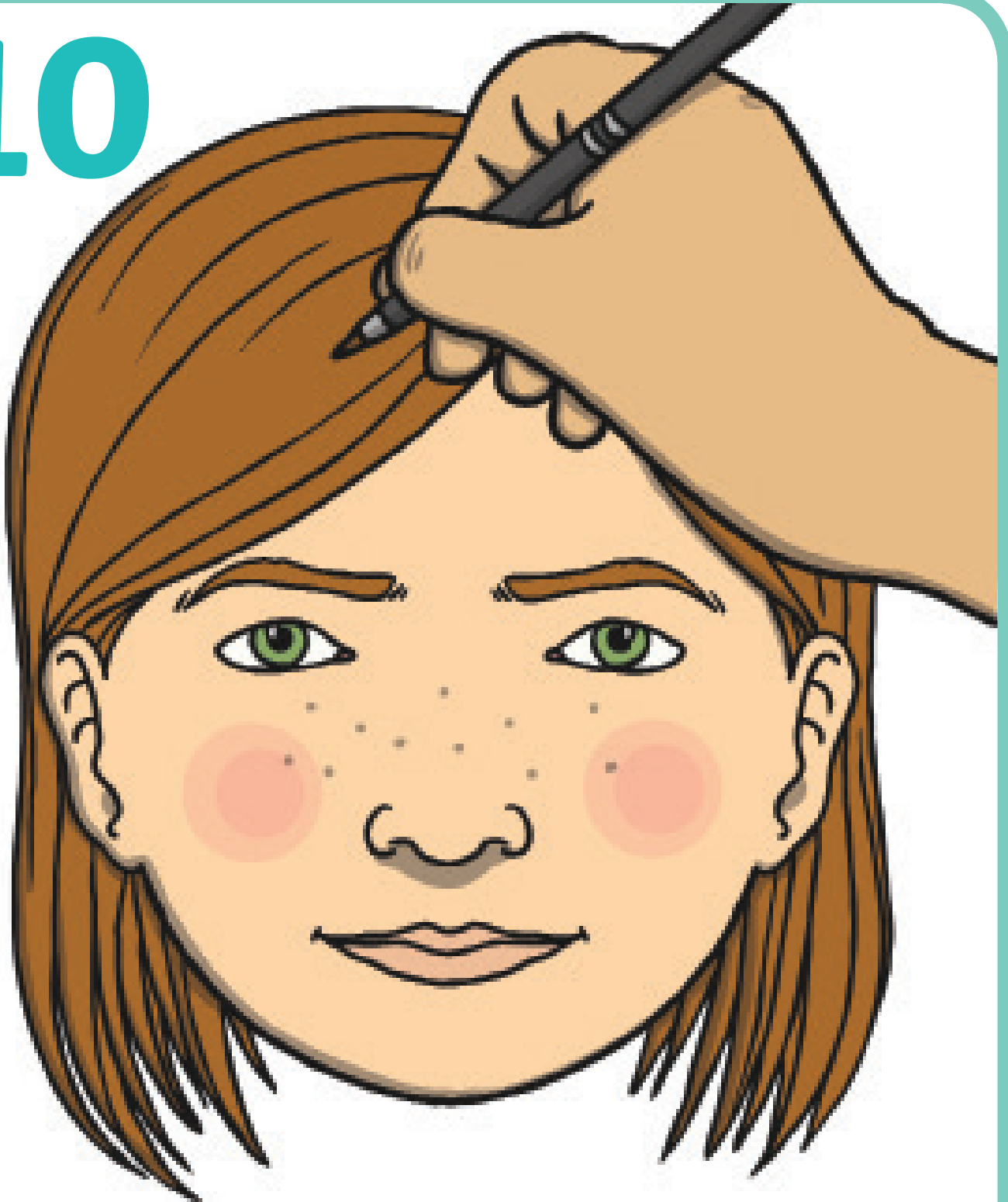
Draw the hair.

9



Go over the lines of the oval that aren't covered by hair. Erase the faint guide lines and the oval lines that are covered by hair.

10



Colour in the face. Don't forget to add the pupils in the eyes and any freckles or other details on the face.