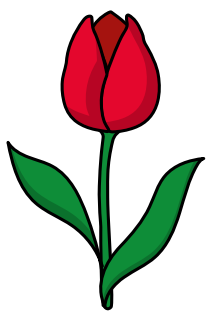
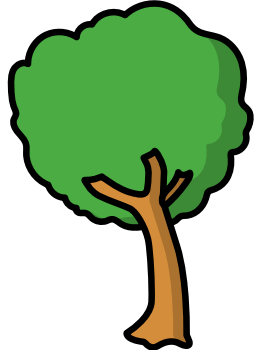
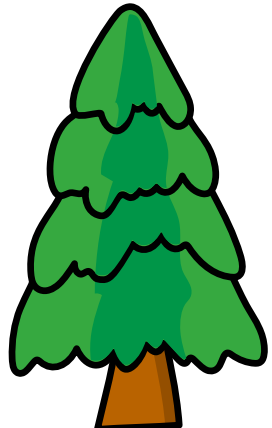


Compare lengths and heights

I a) Tick the taller flower.



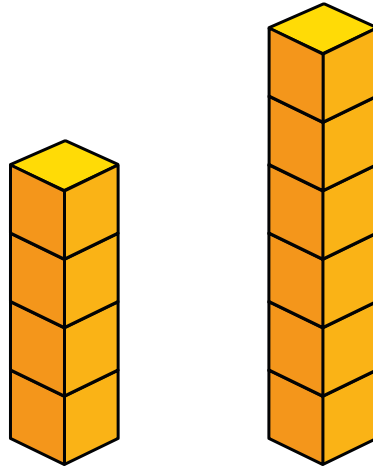
b) Tick the shorter tree.



c) Tick the longest ribbon.



d) Tick the taller tower.

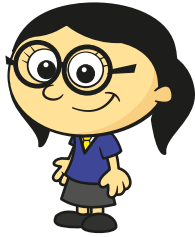


2 Complete the sentences.

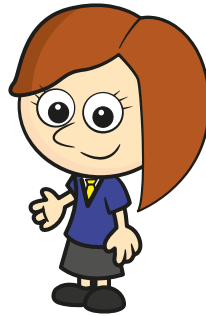


- C is longer than _____
- _____ is the longest train.
- _____ is the shortest train.

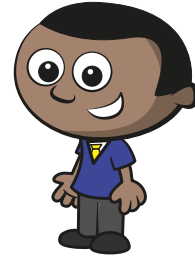
3 Complete the sentences.



Annie



Rosie



Mo

a) _____ is the tallest.

b) Mo is taller than _____.

c) _____ is the shortest.

Compare the heights of your friends.

