

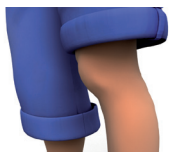
Making words and rhymes: Super Challenge 8

Making rhymes

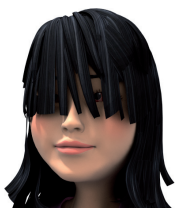
Words that rhyme have the same sound at the end, like **house** and **mouse**.

1. Sort the words into the right boxes.

- | | | | | |
|------|-------|------|-----|-------|
| knee | chair | hat | sea | fat |
| care | bat | bear | mat | pair |
| tree | tea | bee | rat | share |



words that rhyme with cat ...	words that rhyme with tree ...	words that rhyme with hair ...



2. You can use words that rhyme to make silly or funny sentences.

*I saw a **bear** sitting on a **chair**, brushing its **hair**.*

Use the words in the boxes to make up two more silly sentences.

1

2

a
b
c
d
e
f
g
h
i
j
k
l
m
n
o
p
q
r
s
t
u
v
w
x
y
z